

# PRIDE

Process Reporting Information and Data Entry



## Take Charge of Performance With PRIDE

Reliability Centered Maintenance



Enterprise Asset Management



Value-driven Data Collection



All in one powerful productivity solution!

# Check Out

## What You Can Do When You Manage With **PRIDE**

### **Attention: Maintenance Foremen**

- **Eliminate** unscheduled downtime
- **Streamline** work order planning
- **Track** key performance indicators
- **Improve** productivity of crews and technicians

### **Attention: Plant Managers**

- Reduce operating costs and increase **profit margins**
- Develop more **accurate budgets** and forecasts
- Adopt **Asset Management** to extend plant lifecycle
- Ensure **full compliance** with regulatory agencies and procedures

### **Attention: IT Professionals**

- Get access to **real-time data** from plant operations
- Support operations with powerful, yet easy-to-use **data analysis tools**
- Handle information requests with ease through **browser-based ad hoc reporting**
- **Easily reconfigure** system capabilities to meet changing conditions

**B**est of all, with PRIDE you're never at a technology stand still. The system's flexibility and functionality can keep pace for years to come with the demands of ever-changing business environments, the drive for continuous improvement and the urgency for knowledge sharing throughout the organization.

*// We collected data inconsistently, and, even worse, we did not use the data we had to help us improve our operations. Now, thanks to PRIDE, we're a lot smarter about how we run and maintain our plant. //*

**BP Refinery Manager**

# ~~PRIDE~~

## Because Failure Is No Longer An Option!

For decades, the unofficial mission statement of many maintenance departments was "If It Ain't Broke, Don't Fix It." Not anymore! Today, professionals recognize that the true cost of equipment failure extends well beyond the price of parts and labor. Decreased production, idle workers, unhappy customers and other consequences of unscheduled downtime can lead to millions of dollars in losses. So, the mission today is **to measure it, monitor it, and manage it** through a facilities management approach known as **Reliability-Centered Maintenance**, or **RCM**. And, it all starts with PRIDE.

PRIDE— is the **proven mobile technology platform** for RCM programs at process plants and production facilities **worldwide**. PRIDE is at work every day in the most **demanding environments** on the planet, where its **wireless networking capability** increases the productivity and mobility of its users by closing the information gap.

### **You Can't Improve What You Can't Measure**

As the nerve center for successful RCM programs, PRIDE turns data from plant equipment and production systems into a **powerful business advantage**. PRIDE enables maintenance engineers, plant managers and IT professionals to make better, faster decisions about managing operations, assets and resources. The result is a **competitive edge** no production organization can afford to be without.

## The ~~PRIDE~~ System Incorporates:

Laser barcode scanning

Rugged hand-held computers



Integrated, server-based software

Wireless network capability

*With a rock-solid hardware platform by Symbol Technologies®, global leader in productivity solutions, PRIDE is unquestionably a world-class performer.*

# **PRIDE**

## **For Reliability-Centered Maintenance**



Process plants and production lines can only **generate revenue** when they are running. That's challenge number one. Challenge number two is holding onto shrinking margins under pressure daily from higher operating costs and increased regulatory compliance. In this tough economic environment, PRIDE **delivers a powerful, strategic solution** for engineering and maintenance of vital systems and equipment.

The solution starts by **automating rounds and readings**, gathering more accurate plant data and **virtually eliminating paperwork**. It continues by providing skilled technicians with fast, direct access to equipment histories and job plans. It **culminates in full wireless mobility**, enabling operators and technicians to review

and edit system data instantly, from anywhere in the plant!

During a plant tour, for example, an experienced operator could download two-week's worth of readings from a noisy compressor and spot the tell-tale signs of a pending failure. With this **"heads-up" warning**, shutdown and repairs can be planned in advance and scheduled to cause **minimal disruption** for customers and related parts of the organization.

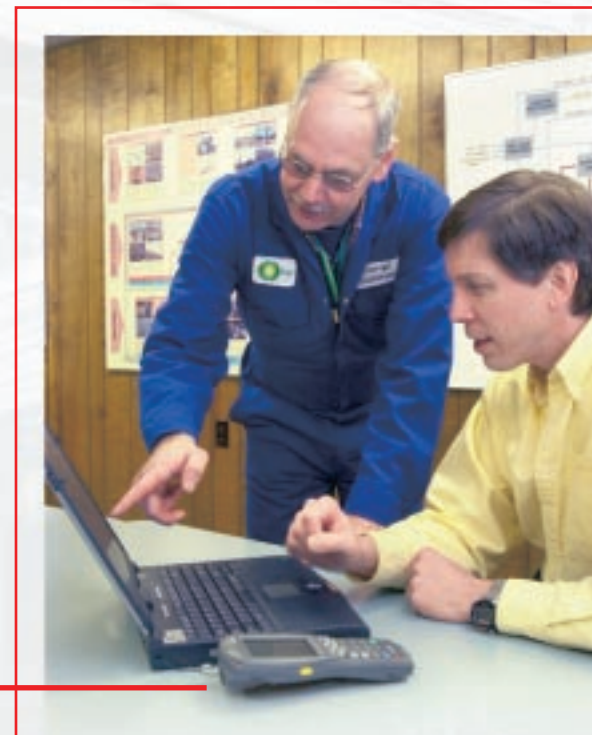
Powered by PRIDE, maintenance departments can **track key performance indicators** linked to the success of their facilities. No longer responding to unexpected failures and breakdowns, they are able to implement a **proactive program** of orderly, well-planned equipment change-outs and plant turnarounds. With the focus on reliability, PRIDE-equipped plants report an **increase in efficiency, productivity and profitability**.

# **PRIDE**

## **For Enterprise Asset Management**

Capital equipment and facilities represent multi-million-dollar investments which must be **intelligently managed** to deliver the highest possible returns to their owners. PRIDE tracks key performance indicators and generates **vital information** that plant business managers can use to **forecast operating expenses**, develop budgets and monitor labor costs. Business and maintenance managers also can work together to develop long-term **preventive maintenance programs** for extending the service life of revenue-producing plant systems and key components.

In addition, PRIDE's **information sharing** capabilities enable managers to tap the expertise of marketing teams, off-site engineers, corporate planning groups and others across the entire organization. The resulting input contributes to **better decisions** for both managing individual facilities and maximizing their contributions to **"big picture"** corporate goals and objectives.



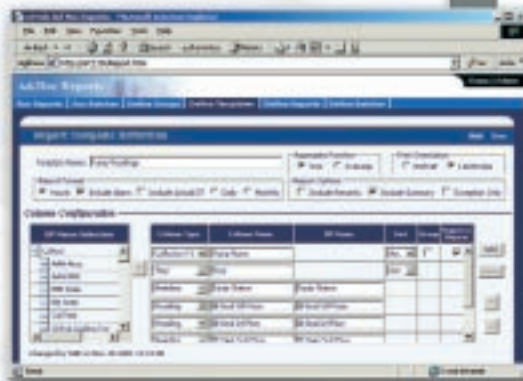
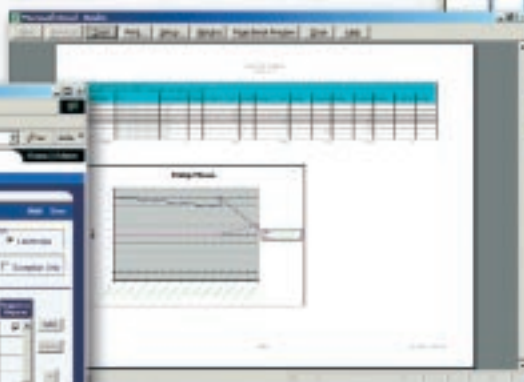
# PRIDE

## for Value-Driven Data Collection

In and of itself, operations data does nothing for the bottom line. But PRIDE turns the numbers into **dollars and "sense"** by putting powerful analytical tools at the fingertips of technical and business experts throughout the organization. PRIDE server-

based software enables users to drill-down through weeks and months of operations data to **pinpoint subtle changes and isolate variables** that can have a huge impact on performance. By sharing and applying their knowledge to the raw data, employee teams can discover ways to improve plant processes, **solve persistent problems** and increase profitability.

For IT professionals, PRIDE is **a breeze to support**. It installs on the leading Microsoft Windows platforms and **integrates with database applications** from Oracle, Sybase or Microsoft SQL Server. Enterprise users can take advantage of PRIDE's ad hoc reporting functions "self-serve" via Internet Explorer web browser from their desktop computers. PRIDE's flexibility and **ease of configuration** ensure **long-term usability** and outstanding return-on-investment.



*Unlock the value of  
plant operations data  
with PRIDE's in-depth  
analytical tools*

## A Few of the Ways Customers Are Using

### PRIDE

- Operator Rounds
- Environmental Tracking/Reporting
- Condition Based Monitoring
- Work Order Initiation
- Process Optimization
- Regulatory Compliance
- Chemical Optimization and Inventory
- Engineering and Maintenance
- Laboratory Sampling



# PRIDE

## In Action

Throw away the clipboards and log sheets and eliminate the potential for errors associated with manual data collection. With PRIDE, plant-specific tours and equipment inspections are **precisely programmed and loaded** for use onto hand-held computers which integrate PocketPCs with barcode scanners. The rugged units are carried by operators and technicians as they make their rounds of plants and processing facilities.



1

At each programmed **tour stop**, the operator scans a barcode label designated for equipment at that location.

2

With a **barcode match**, the PocketPC prompts the user to enter operational data within prescribed parameters until all readings for the stop are verified.

3

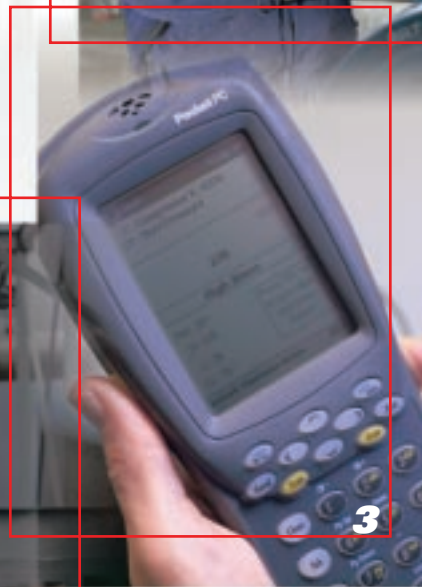
Out-of-range data entries immediately alert users to recheck equipment readings and/or to activate an "alarm condition" in response to potential technical problems or safety issues. **Alarm Instructions** with embedded web page hyperlinks provide the user with detailed information concerning the condition.

4

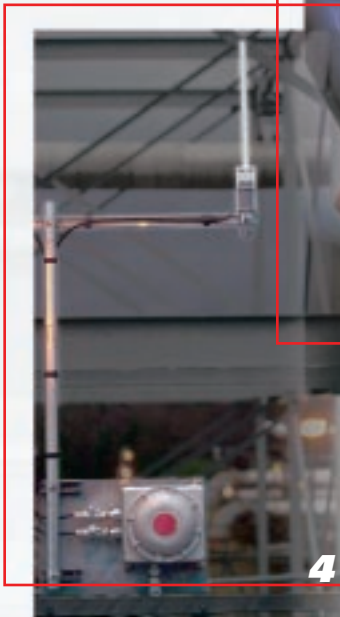
As operators make their rounds, the hand-held units **automatically transfer data** via the wireless RF transmitter built into each unit. Data is available immediately to PRIDE server-based applications for further analysis and may be data warehoused for use with other business systems.



2



3



4

*With its error-free, paperless data collection, powerful graphic display and analysis functions and browser-based Microsoft Excel™ reporting*

*capabilities, PRIDE unlocks the value of operations' information for use throughout the organization.*



## **~~PRIDE~~ ... from SAE**

**Since 1971**, Systems Application Engineering, Inc. has been developing successful productivity and business solutions for global companies in energy, manufacturing, logistics/transportation, telecommunications and other major industry sectors. SAE approaches each assignment as a committed partner focused on the success of its customers. The company's **turn-key solutions** include comprehensive user tools, training and support, concise documentation and performance-based warranties. The result is a steady flow of customer testimonials reporting hundreds of thousands of dollars in bottom line benefits thanks to SAE products, technology and people.





**Systems Application Engineering, Inc.**

SAE Corporate Headquarters • 3655 Westcenter Drive • Houston, Texas 77042  
FAX 713/783-3434 • Voice 713/783-6020 • [www.saesystems.com](http://www.saesystems.com)